

Addendum Number # 1

Date: November 20, 2024

Project Name: HCI Level 3 Lab Remodel

Project Number: 70509

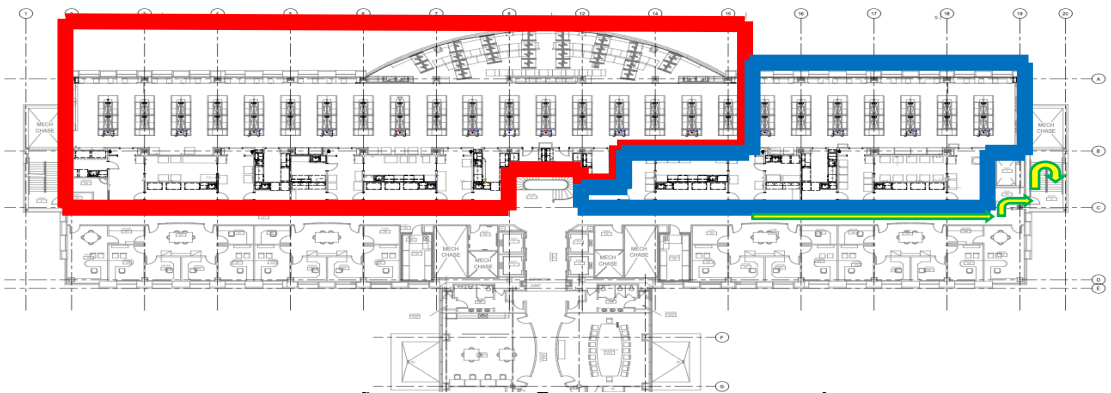
The following is issued to supplement and/or revise the *Bid Document* as described below. Unless specifically changed by this or previously issued **ADDENDA**, the *Bid Document* shall remain in effect as originally issued. Interested Contractors are urged to review the *Bid Document* carefully to understand the scope of the Project and the items contained within this **ADDENDUM**. It shall be the responsibility of the Prime Contractor to appropriately disseminate this information to all concerned Sub-Contractors, if appropriate, prior to the response due date.

Please see the questions and answers from the Bid Walk.

HCI L3 Lab Remodel [70509 / 5171927]
Pre-Bid Meeting Questions

18-Nov-2024

1. What is preferred travel path for materials & waste?
 - a. See Below – Arrows (Yellow/Green)
2. What is the phasing plan for construction?
 - a. See Below
 - i. Red = Construction Phase 1
 - ii. Blue = Construction Phase 2



- a. Yes
4. Will both phases be quoted as one package?

- a. Yes
5. What is the floor to deck height?
 - a. Approximately 15'7".
6. What is above and below the lab?
 - a. Above the lab = duplicate lay-out with labs
 - b. Below the lab = patient treatment area.

General Comments for clarification:

- Keep ceiling tiles in place as much as possible – in lab areas.
- Maintain wood sills
- Shades stay
- Maintain umbilical chases for med-gasses
- Sink placement stays relatively the same